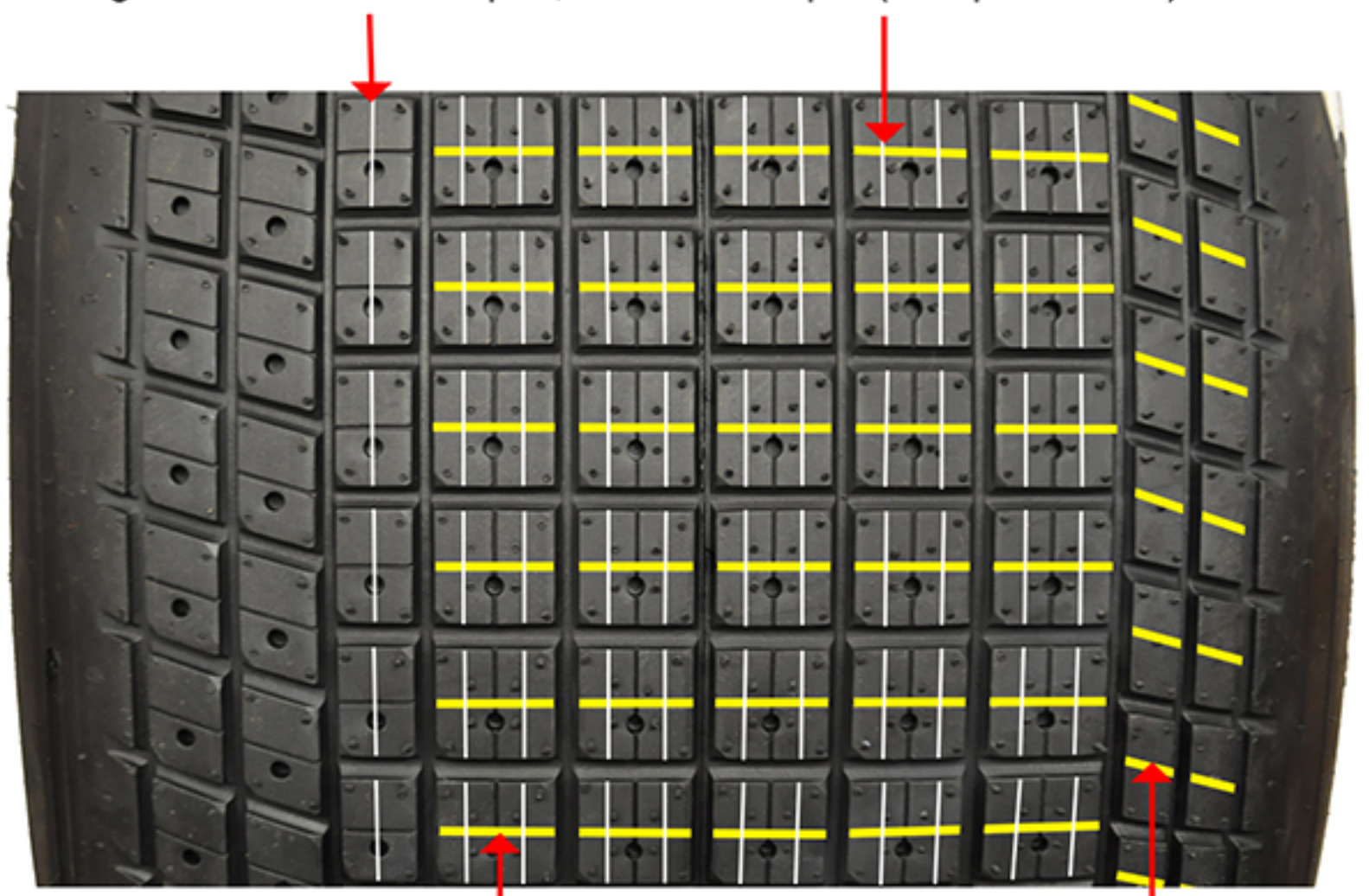


105/16-15 H15, H20

Normal track conditions

#2 Ideal blade and head is recommended

Single circumferential sipes, about half depth (dissipates heat)



(Inside of tire)

(Outside of tire)

Very narrow groove, approximately 3/4 depth of block
Straight across or at a slight angle

Notes:

- Circumferential siping and grooving helps dissipate heat. Also helps with sidebite.
- Cross grooving helps with forward bite and removing loose dirt.

Yellow = Groove
White = Sipe