

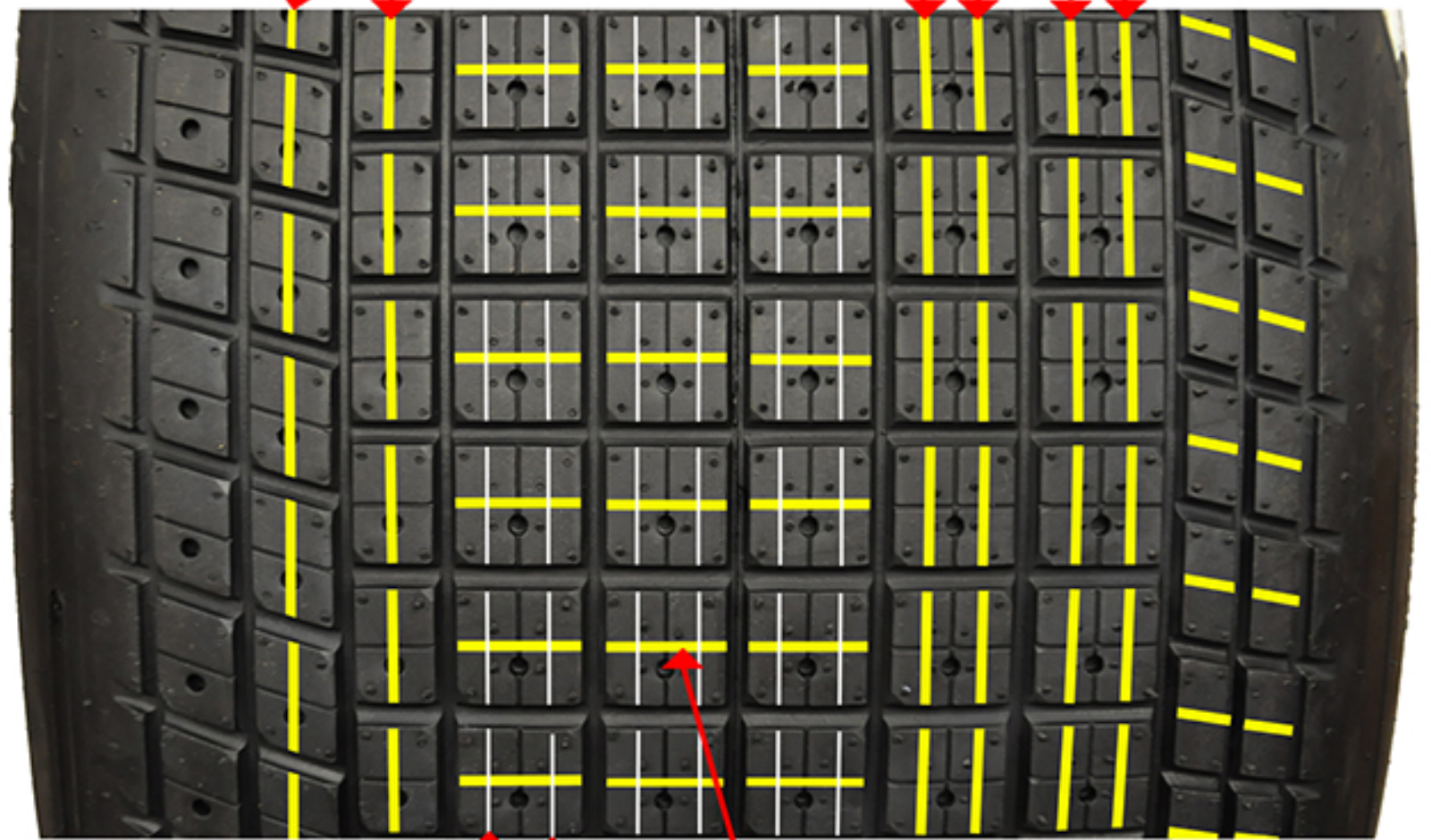
105/16-15 MED

High heat track conditions

#2 Ideal blade and head is recommended

Narrow circumferential grooves

Narrow circumferential grooves



(Inside of tire)

(Outside of tire)

Narrow Cross grooves

Narrow circumferential sipes, about half depth

Notes:

- Circumferential siping and grooving helps dissipate heat. Also helps with sidebite.
- Cross grooving helps with forward bite and removing loose dirt.

Yellow = Groove
White = Sipe